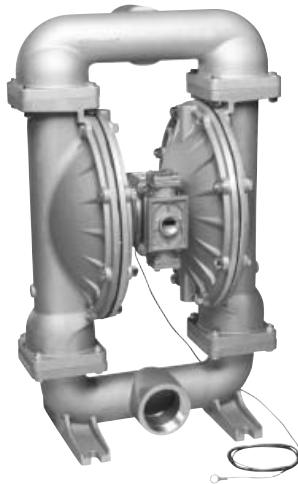


**WARREN
RUPP®**

SANDPIPER®

A WARREN RUPP PUMP BRAND



Quality System
ISO9001 Certified

Environmental
Management System
ISO14001 Certified

IDEX
FLUID & METERING



CSA Certified
to Requirement
2.01 U.S.



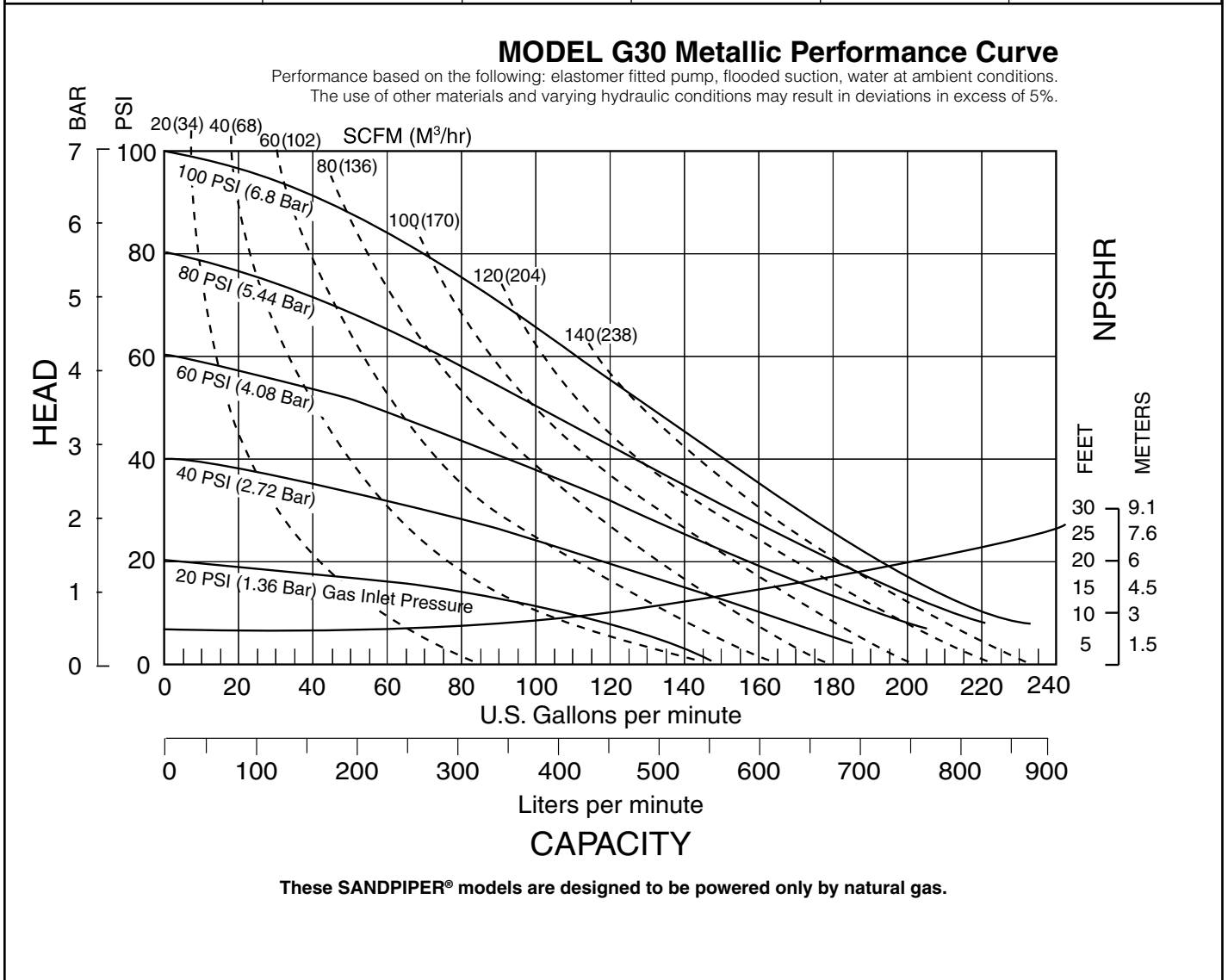
Certified to CSA
Technical Letter
No. R-14

U.S. Patent #
5,996,627; 6,241,448
Other U.S. Patents
Applied for

**G30 Metallic
Design Level 1
Ball Valve**
**Natural Gas Operated
Double Diaphragm Pump**

ENGINEERING, PERFORMANCE
& CONSTRUCTION DATA

INTAKE/DISCHARGE PIPE SIZE	CAPACITY	AIR VALVE	SOLIDS-HANDLING	HEADS UP TO	DISPLACEMENT/STROKE
3" NPT (internal) 3" BSP Tapered (internal)	0 to 235 gallons per minute (0 to 889 liters per minute)	No-lube, no-stall design	Up to .38 in. (9.65mm)	100 psi or 230.7 ft. of water (7 Kg/cm ² or 70 meters)	.94 Gallon / 3.56 liter



Explanation of Pump Nomenclature

G30 Metallic · Design Level 1 · Ball Valve

MODEL	Pump Brand	Pump Size	Check Valve Type	Design Level	Wetted Material	Diaphragm/Check Valve Materials	Check Valve Seat	Non-Wetted Material Options	Porting Options	Pump Style	Pump Options	Shipping Kit Options	Weight lbs. (kg)
G30B1ABBXNSX00.	G	30	B	1	A	B	B	X	N	S	X	00.	113 (52)
G30B1A5BXNSX00.	G	30	B	1	A	5	B	X	N	S	X	00.	113 (52)
G30B1ATTXNSX00.	G	30	B	1	A	T	T	X	N	S	X	00.	113 (52)
G30B1SBBXNSX00.	G	30	B	1	S	B	B	X	N	S	X	00.	194 (87)
G30B1S5BXNSX00.	G	30	B	1	S	5	B	X	N	S	X	00.	194 (87)
G30B1STTXNSX00.	G	30	B	1	S	T	T	X	N	S	X	00.	194 (87)
G30B1ABBXBSX00.	G	30	B	1	A	B	B	X	B	S	X	00.	113 (52)
G30B1ATTXBSX00.	G	30	B	1	A	T	T	X	B	S	X	00.	113 (52)
G30B1SBBXBSX00.	G	30	B	1	S	B	B	X	B	S	X	00.	194 (87)
G30B1STTXBSX00.	G	30	B	1	S	T	T	X	B	S	X	00.	194 (87)

Pump Brand

G=Gas Operated

Pump Size

30=3"

Check Valve Type

B=Ball

Design Level

1=Design Level

Wetted Material

S=Stainless Steel

A=Aluminum

Diaphragm Check Ball Materials

B=Nitrile/Nitrile

T=PTFE overlay, Buna/PTFE

5=Nitrile/PTFE

Check Valve Seat

T=PTFE

B=Nitrile

A=Aluminum

S=Stainless Steel

Non-Wetted Material

X=Unpainted Aluminum

S=Stainless Steel

8=Stainless Steel/FKM Elastomers

O=Unpainted Aluminum/FKM Elastomers

Porting Options

N=NPT Threads

B=BSP (Tapered) Threads

Pump Style

S=Standard

Pump Options

X= No Muffler Permitted *

* The exhausted natural gas must be vented to a low pressure safe location in accordance with local fire safety and environmental codes, an industry or nationally recognized code having jurisdiction over the specific installations, and/or CAN/CGA B149, Installation Codes.

These pump models are designed to pump the following fluids: Crude Oil, Salt Water, Drilling Mud, Condensate, Lubrication Oils, Glycol, Caustic liquids, and Acids.

CAUTION! *Operating temperature limitations are as follows:* The minimum pump operating temperature is -10°F . The maximum pump operating temperature is 180°F

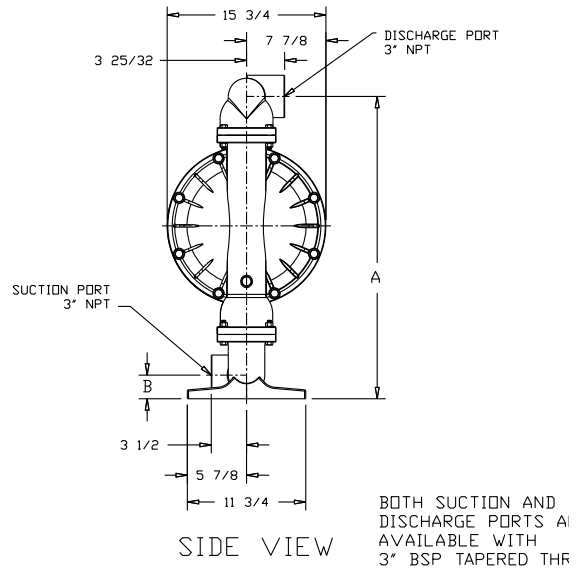
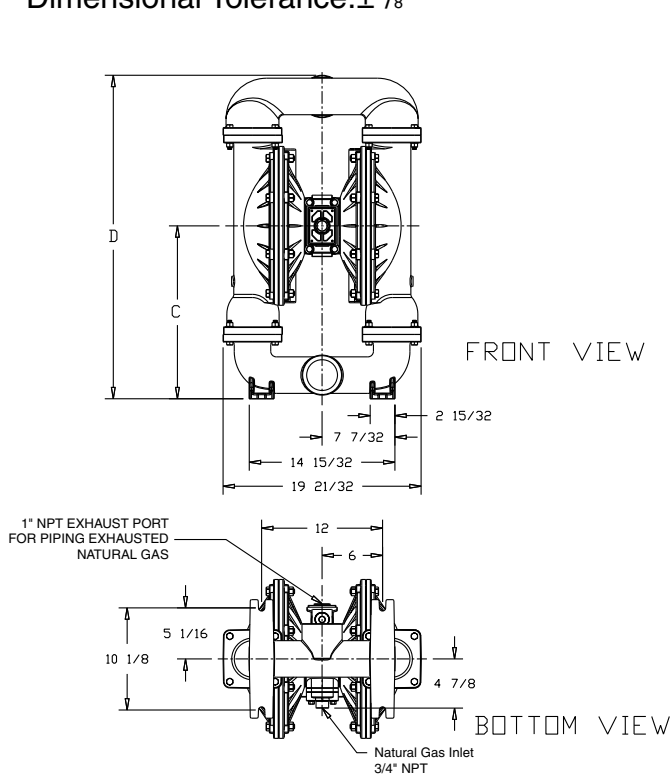
Materials	Operating Temperatures	
	Maximum	Minimum
Nitrile: General purpose, oil-resistant. Shows good solvent, oil, water and hydraulic fluid resistance. Should not be used with highly polar solvents like acetone and MEK, ozone, chlorinated hydrocarbons and nitro hydrocarbons.	190°F 88°C	-10°F -23°C
Virgin PTFE: Chemically inert, virtually impervious. Very few chemicals are known to react chemically with PTFE: molten alkali metals, turbulent liquid or gaseous fluorine and a few fluoro-chemicals such as chlorine trifluoride or oxygen difluoride which readily liberate free fluorine at elevated temperatures.	220°F 104°C	-35°F -37°C
FKM (Fluorocarbon): Excellent resistance to sour natural gas, high temperature, acids, hydrogen sulfide and oil.	400°F 204°C	-15°F -26°C

For specific applications, always consult "Chemical Resistance Chart" Technical Bulletin

Dimensions: G30 Metallic

Dimensions in Inches

Dimensional Tolerance: $\pm 1/8$ "



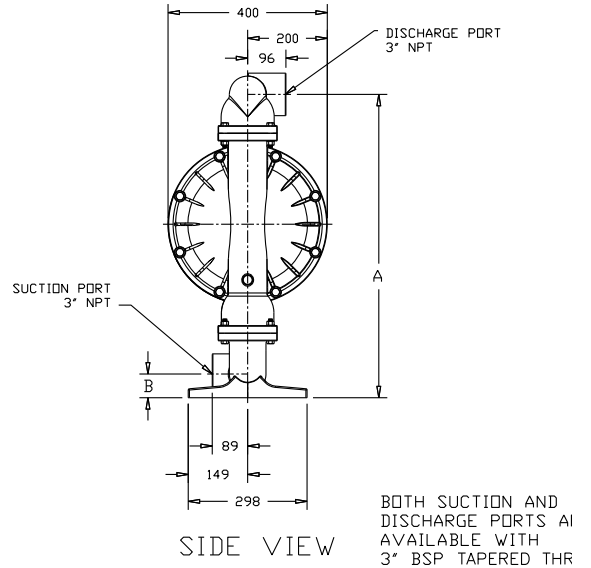
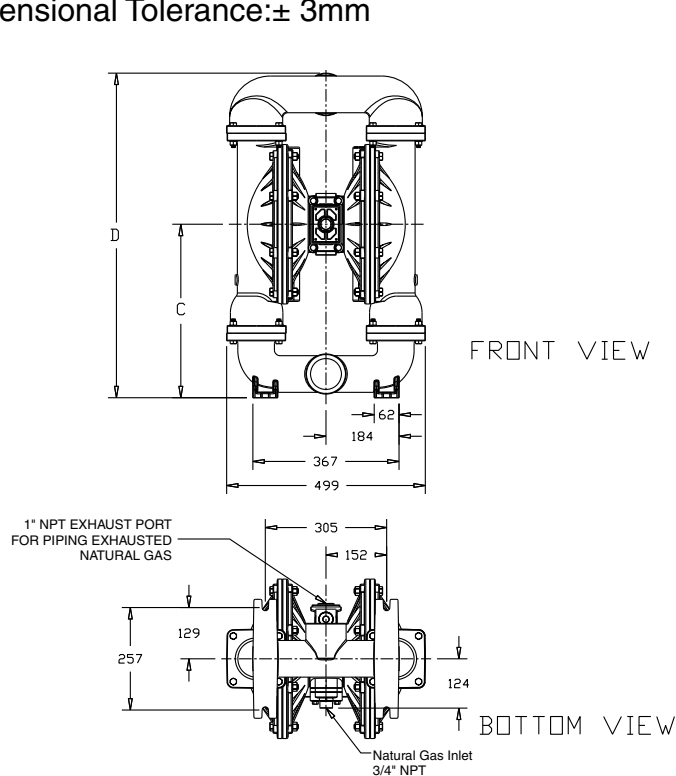
BOTH SUCTION AND DISCHARGE PORTS AVAILABLE WITH 3" BSP TAPERED THR

Note: The pump is to be mounted in the horizontal position.

Dimension	A	B	C	D
Aluminum	29 ³¹ / ₃₂	2 ¹¹ / ₃₂	17 ⁹ / ₆₄	32 ¹ / ₁₆
Stainless Steel	30 ³ / ₁₆	2 ⁹ / ₁₆	17 ¹¹ / ₃₂	32 ⁹ / ₃₂

Dimensions in Millimeters

Dimensional Tolerance: ± 3 mm



BOTH SUCTION AND DISCHARGE PORTS AVAILABLE WITH 3" BSP TAPERED THR

Note: The pump is to be mounted in the horizontal position.

Dimension	A	B	C	D
Aluminum	761	60	435	815
Stainless Steel	767	66	441	821