

**WARREN  
RUPP®**

Quality System  
ISO9001 Certified

Environmental  
Management System  
ISO14001 Certified

**IDEX**  
FLUID & METERING



**SANDPIPER®**  
A WARREN RUPP PUMP BRAND

**BALL VALVE  
SSB2-A TYPE 3**

**2" x 2 1/2" Air-Powered  
Double-Diaphragm  
Sanitary Pump**

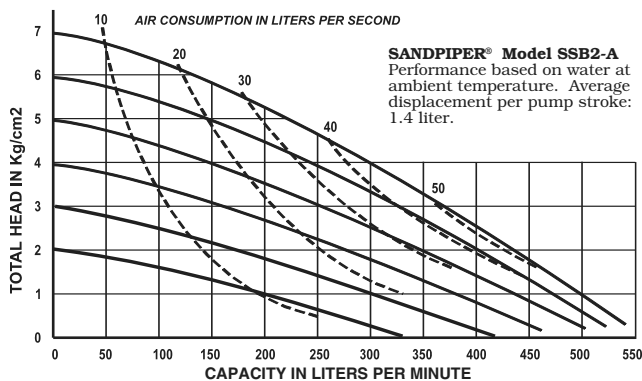
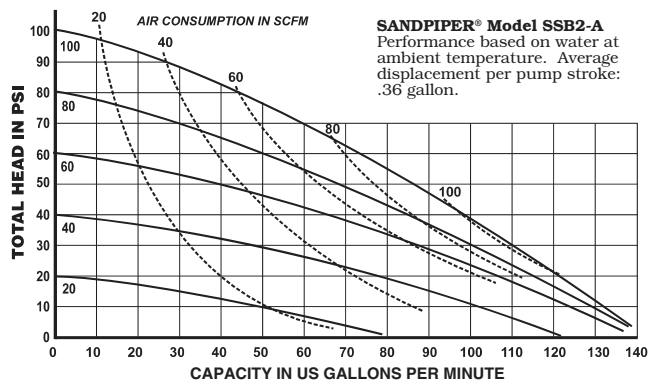
ENGINEERING, PERFORMANCE  
& CONSTRUCTION DATA

<b>INTAKE/DISCHARGE PIPE SIZE</b> Suction: 2 1/2" Sanitary Process Clamp Fitting Discharge: 2" Sanitary Process Clamp Fitting	<b>CAPACITY</b> 0 to 125 gallons per minute (0 to 473 liters per minute)	<b>AIR VALVE</b> No-lube, no-stall design	<b>SOLIDS-HANDLING</b> 1/4" (6mm)	<b>HEADS UP TO</b> 125 psi or 289 ft. of water (8.8 Kg/cm <sup>2</sup> or 88 meters)
---	--	---	--------------------------------------	--

**PERFORMANCE CURVES**

(SANDPIPER® pumps are designed to be powered only by compressed air)  
Temperature Limit: 212°F - 100°C MAXIMUM

**This pump is USDA-Accepted for meat and poultry.**



**MATERIALS OF CONSTRUCTION**

SSB2-A Type 3	Manifold	Outer Chamber	Inner Chamber	Outer Diaphragm Plate	Inner Diaphragm Plate	Intermediate Housing	Diaphragm Rod	Valve Seat	Hardware	Diaphragm	Ball Valve Material	Air Valve	Shipping Weight (lbs)
TF-3-SS	316SS	CF8M†	AL356-T6◊	CF8M†	AL380DC	356-T6AL◊	416SS	FDA-N	302/304SS	FDA-N	FDA-N	AL356-T6◊	120
TD-3-SS	316SS	CF8M†	AL356-T6◊	CF8M†	AL380DC	356-T6AL◊	416SS	FDA-N	302/304SS	D	D	AL356-T6◊	120

**Meanings of Abbreviations:**

† = Electropolished  
◊ = Electroless Nickel Plated  
AL = Aluminum  
D = FDA Accepted Santoprene

DC = Die Cast  
FDA-I = Food Grade EPDM  
FDA-N = Food Grade Nitrile

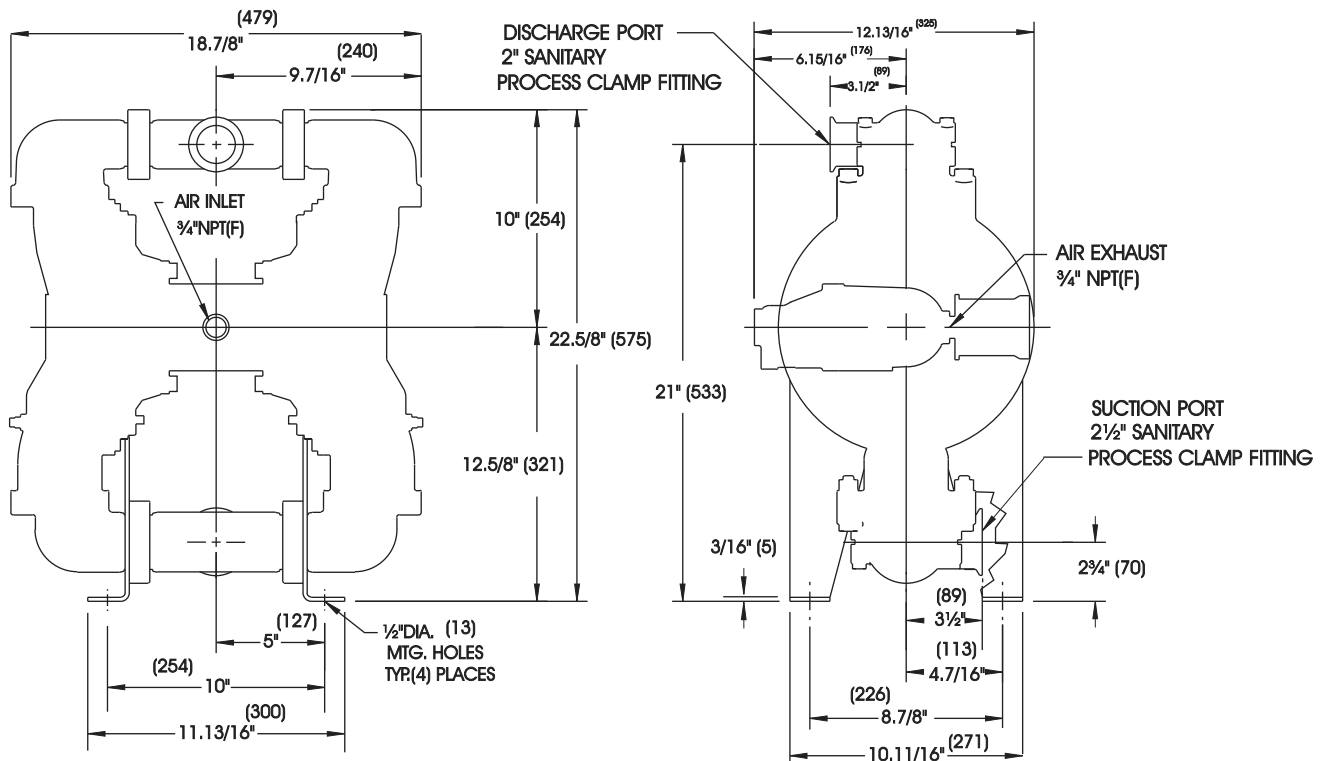
PP = Polypropylene-Glass Filled  
SS = Stainless Steel

# SSB2-A BALL VALVE SANITARY



MATERIALS	Operating Temperatures	
	Maximum	Minimum
<b>FDA Accepted NITRILE</b> General purpose, oil-resistant. Shows good solvent, oil, water and hydraulic fluid resistance. Should not be used with highly polar solvents like acetone and MEK, ozone, chlorinated hydrocarbons and nitro hydrocarbons.	190°F 88°C	-10°F -23°
<b>FDA Accepted EPDM</b> Shows very good water and chemical resistance. Has poor resistance to oil and solvents, but is fair in ketones and alcohols.	212°F+ 100°C	-10°F -23°
<b>CF8M</b> Stainless Steel equal to or exceeding ASTM specification A743 for corrosion resistant iron chromium, iron chromium nickel, and nickel based alloy castings for general applications. Commonly referred to as 316 Stainless Steel in the pump industry.		
For specific applications, always consult the Warren Rupp "Chemical Resistance Chart"		

Dimensions are ± 1/8"  
 Figures in parenthesis = millimeters



**SUCTION 2 1/2" QUICK CONNECT SANITARY PROCESS CLAMP FITTINGS**  
**DISCHARGE 2" QUICK CONNECT SANITARY PROCESS CLAMP FITTINGS**  
**3/4" NPT (F) AIR INLET PORT • 3/4" NPT (F) AIR EXHAUST PORT**